



Ministry
of Justice

Home Office Police Custody Design Guide – preparing a revised edition

Andrew Digby

Head, Standards, Safety and Security, Justice Estates Cluster

Custodial Forum Event

November 2018

Ownership of the Guide



- * 2016 formation of Justice Estates Cluster

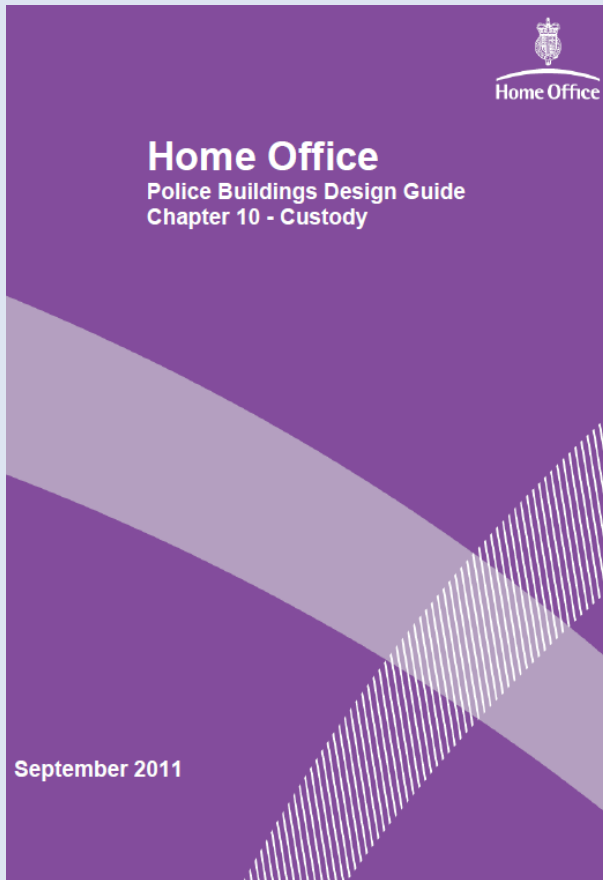
- * Based at MoJ, Cluster looks after all estates for Home Office, MoJ and a range of other departments and agencies



- * Cluster assumed responsibility for Home Office Police Custody Design Guide

(Senior Clinical Forensic Charge Nurse, Jessica Davidson)

The current edition(s) of the Guide



- * **Published 2011**
- * **Revised 2014 edition but in draft**
- * **Accepted as a final version by supply chain**
- * **Now needs revision to cater for advent of digital construction, new construction techniques**

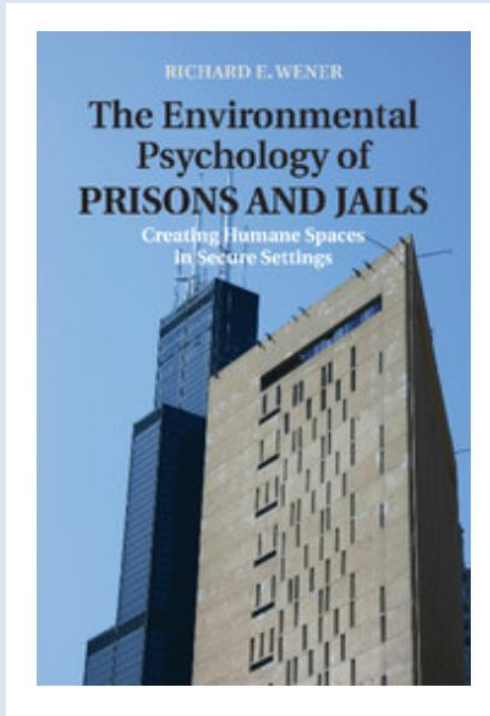
New edition of the Guide

- * Project under way with own Board
- * New edition due end of 2018
- * Draw on recent academic research
- * Retain emphasis on safety and security but stress staff welfare and treating detainees with dignity
- * Move towards digital construction and modern means of construction

Police and Border Force custody design guide—draft contents and structure

- 1. Introduction
- Scope of the Guide
 - Custody and related areas but not HQ facilities
 - Design, construction, maintenance; new build and refurbishment
 - Status of the Guide to best practice; not absolute requirement; sources of further advice on matters covered by the Guide
 - How to use the Guide; the Guide and the project brief
 - Over-arching principles
 - Security, safety (H&S, fire safety and well-being) and operational effectiveness as three primary principles
 - Capex, O&M, ease of FM, sustainability considerations as supporting principles
 - Construction project process
 - Inception to handover, including the soft landings process
 - Border Force Agency facilities annex
 - 2. Law and regulation relating to custody (PACE, HASAW, RRO)
 - PACE 1984 and its application to the built environment
 - Equality Act 2010 and the built environment
 - RRO 2005
 - HASAW Act and other H&S regulations
 - Other guides to best practice
 - 3. The journey of the detainee through the custody suite
 - Detainees and their needs (physical health needs, mental health needs, intoxication, violence, disability, social care needs, juvenile considerations)
 - Arrest
 - Other entries into the custody suite—prisoner returns, voluntary visits
 - Arrival
 - Forensic search
 - Booking in
 - Strip search
 - Cell
 - DNA, fingerprint, breathalyser, medical examination, interpreter, exercise, visit, etc
 - Legal consultation
 - Interview
 - Charge (bail, court) or release
 - 4. Other custody users and their needs

Recent research



“The design of a jail or prison is critically related to the philosophy of the institution, or maybe even of the entire criminal justice system. It is the physical manifestation of a society's goals and approaches for dealing with arrested and/or convicted men and women”

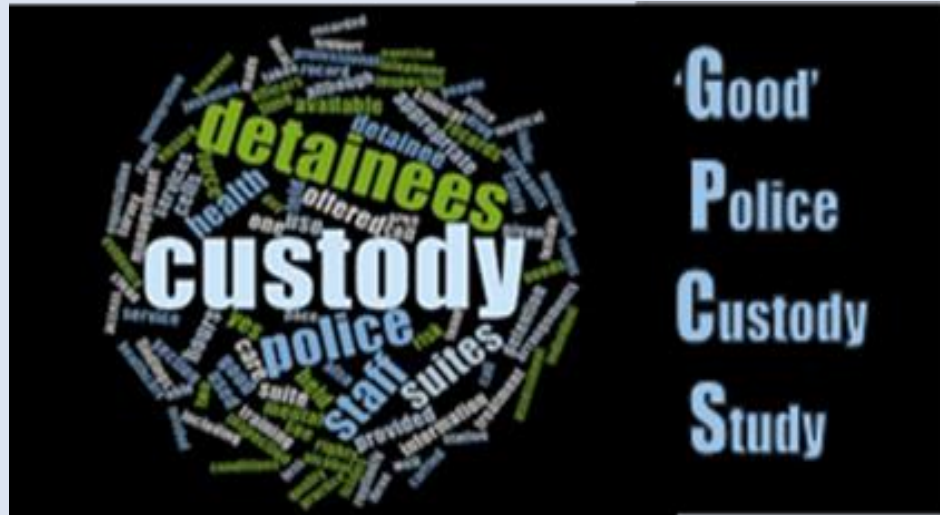
Interest in cultural statement made by detention design and impact on detention staff and detainees

Recent research



Models of detention in other jurisdictions

Recent research



University of Sheffield - five year study ending 2018

Some relevant conclusions:

- Police custody place of fluid emotions
- Charge desk a key point for response of detainees
- Design had some impact on detainee emotions
- Feeling of uncertainty, limbo, loss of sense of time

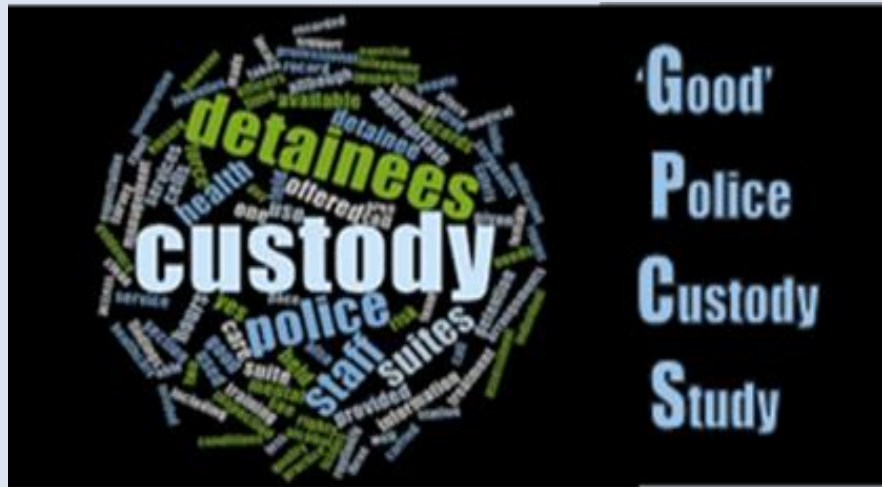
Recent research



Some relevant specific findings

- Detainee perception of built environment related to perception of being treated with dignity
- Staff perception of conditions related to detainee perceptions of being treated with dignity

Recent research



Some relevant specific recommendations

- Importance of light and daylight
- Increased availability of clocks
- Use of colour in cells
- Re-think charge desk design
- Better exercise yards
- Better staff facilities

Revised guiding principles



- * Security
- * Safety
- * Dignity
- * Statutory compliance
- * Effective operations

Revised guiding principles



HMIC expectations section 3

- * respect to detainees
- * treatment with dignity
- * adherence to equality legislation

Revised guiding principles



HATTON GARDEN ROBBERY

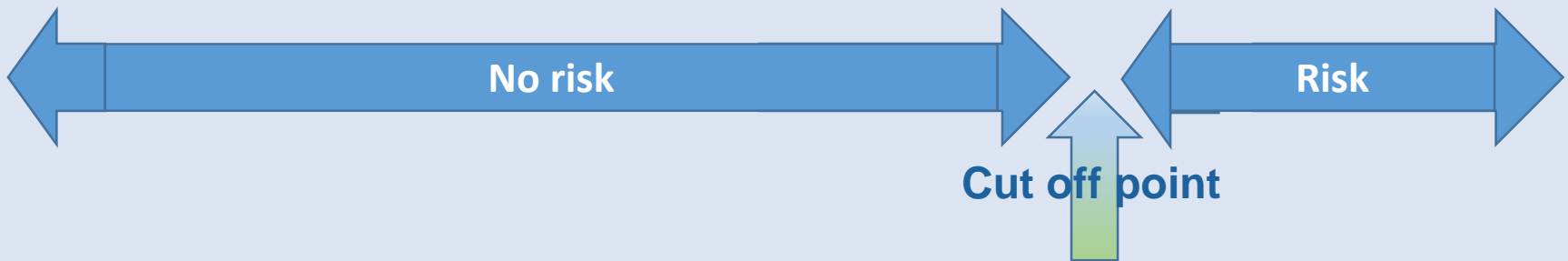
Hatton Garden ringleader claims he gained NOTHING from £25m heist as he attends court in wheelchair

HMIC inspection expectations - appropriate treatment of:

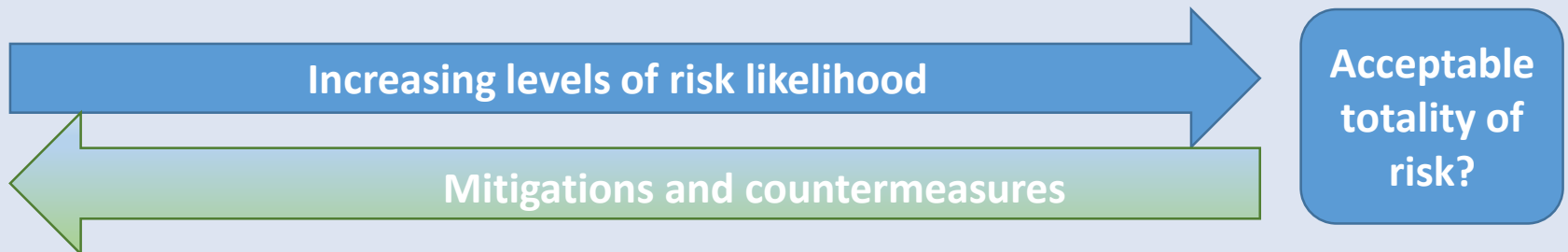
- * **children**
- * **vulnerable adults**
- * **women**
- * **older people**
- * **transgender people**
- * **people with disabilities**

Revised approach to risk

Binary approach



Scalar/spectrum approach

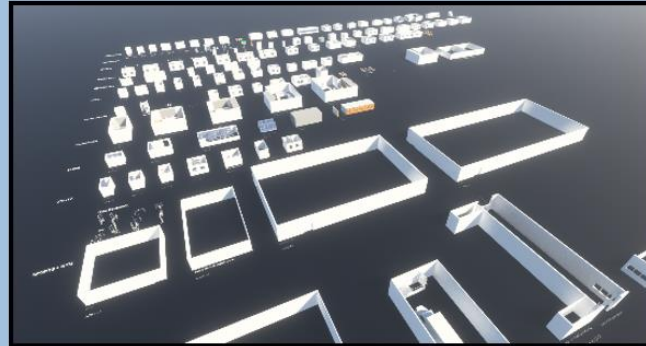
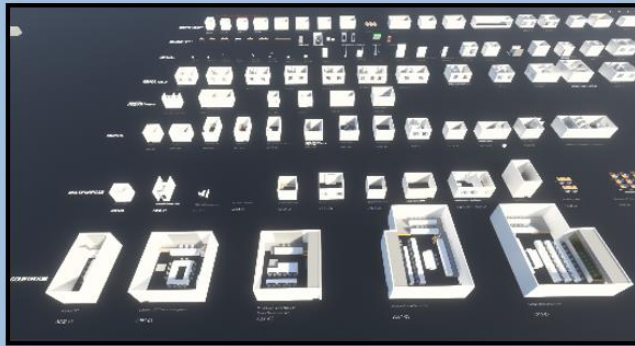


The £2 coin test



- * £2 coin test (or 3mm drill bit)
- * *as starting point only*
- * Mitigations and counter-measures

Modern construction



Use of digital construction methodology (otherwise known as BIM)

Modern Construction



Entry hole



Back

DGA Test

D J Goode & Associates (2011 tests)

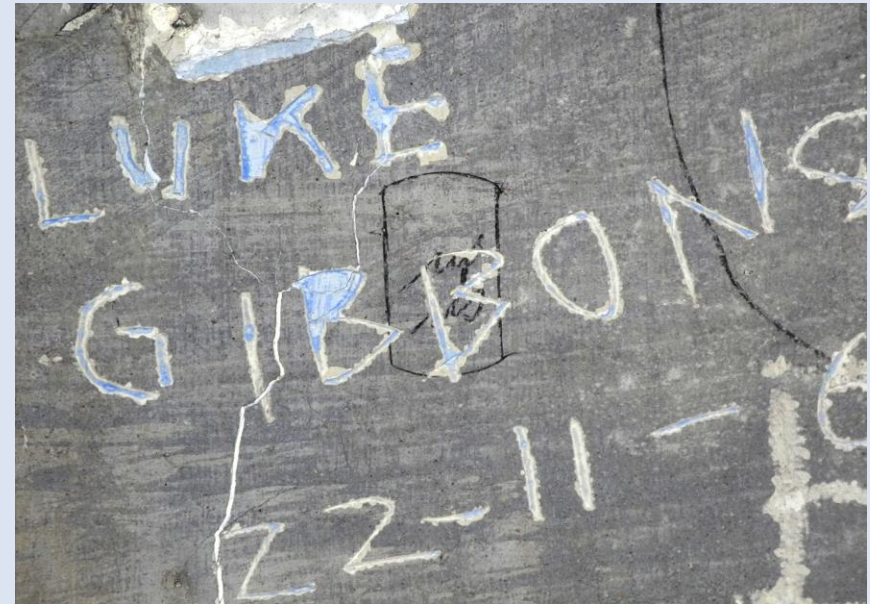
- Tested to UL 752 Level 5 bullet resisting equipment standard
 - military or hunting rifle (e.g. 308 Winchester)
 - 7.62 mm 9 g lead core bullet at 858 m/s
- SPS 5-20-5 mild steel passes
- SPS 4-20-4 armour steel passes

Qinetiq (2002 tests)

- landing craft beachhead attack
- 7.62mm general purpose machine gun/rifle and 0.5" heavy machine gun fire
- Firings at 30m
- Strike angle varied
- Targets 1m x 1m
- SPS 3-30-3 mild steel passes
- SPS 3-30-5 bi-metal stainless steel and aluminium

Will facilitate use of new materials

Modern Construction



Whole life cycle approach

Modern Construction



Blue light services co-location issues (?)